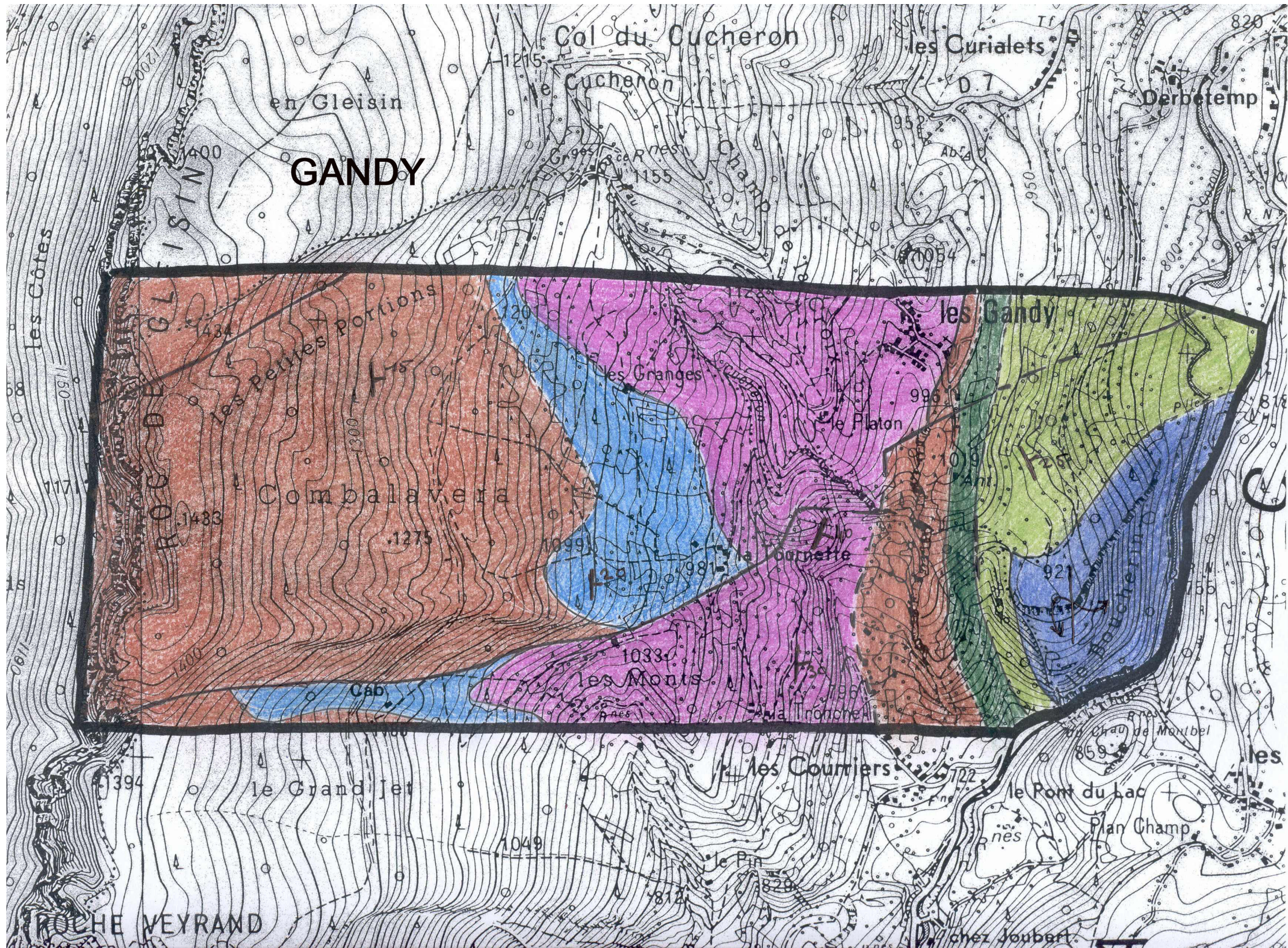
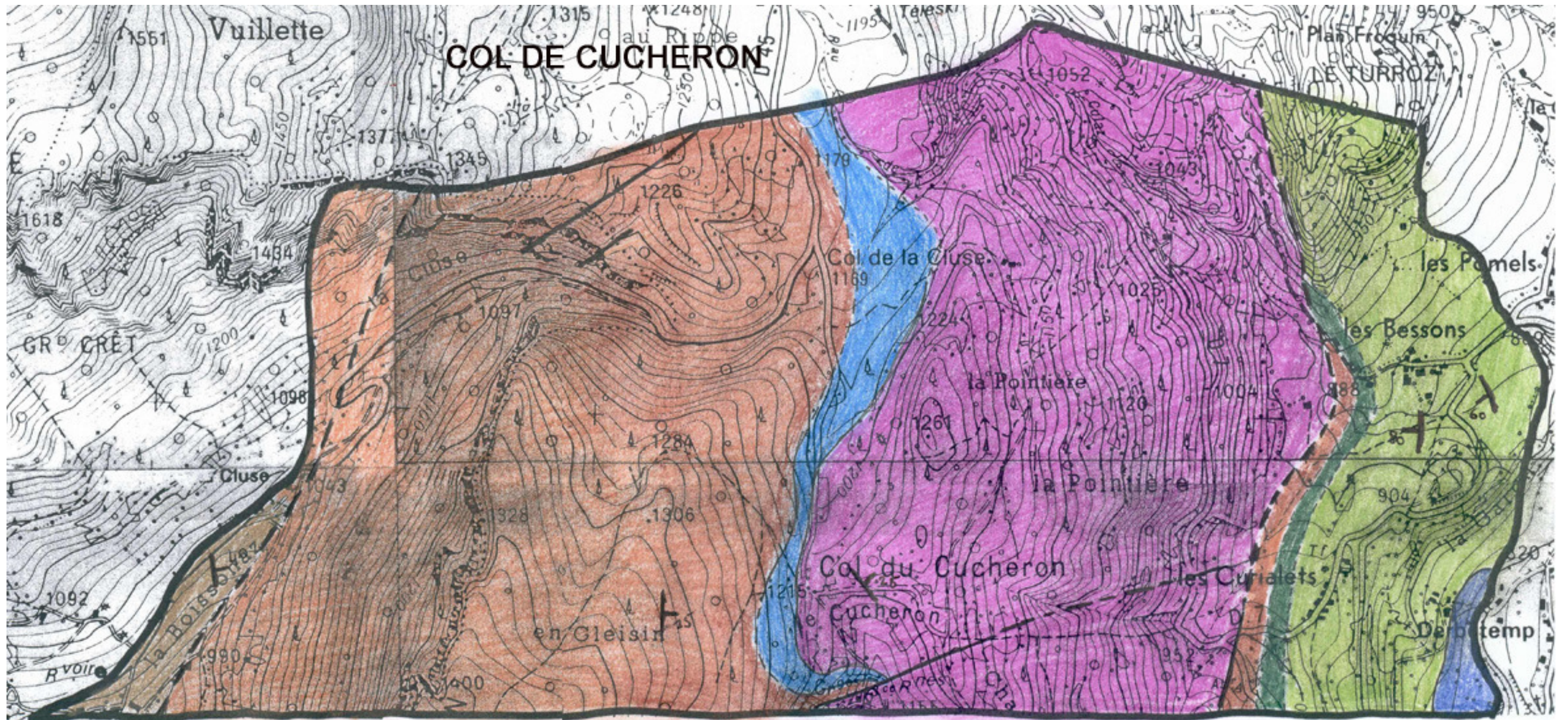


Cartes géologiques « élèves » au 10 000^{ème}

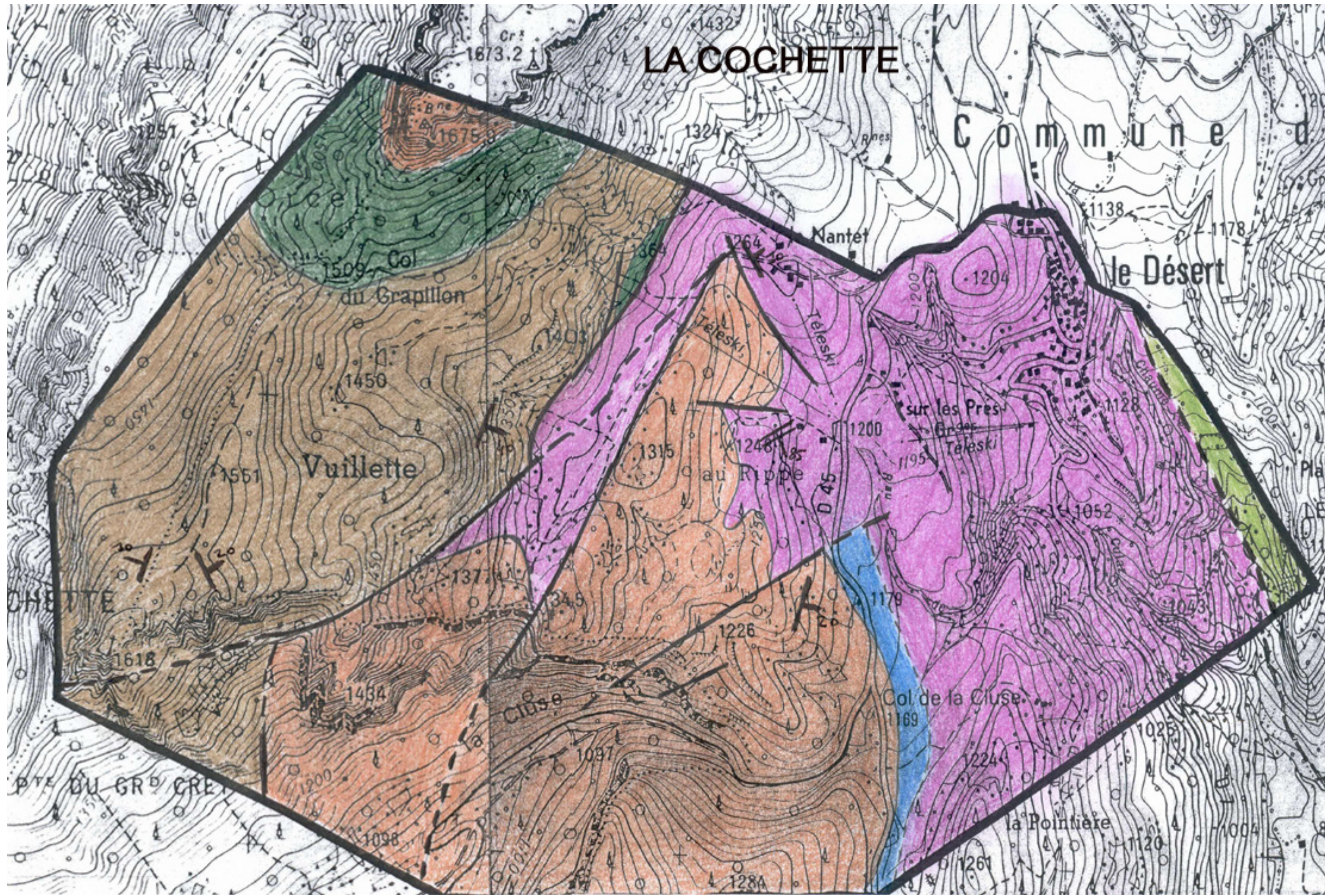




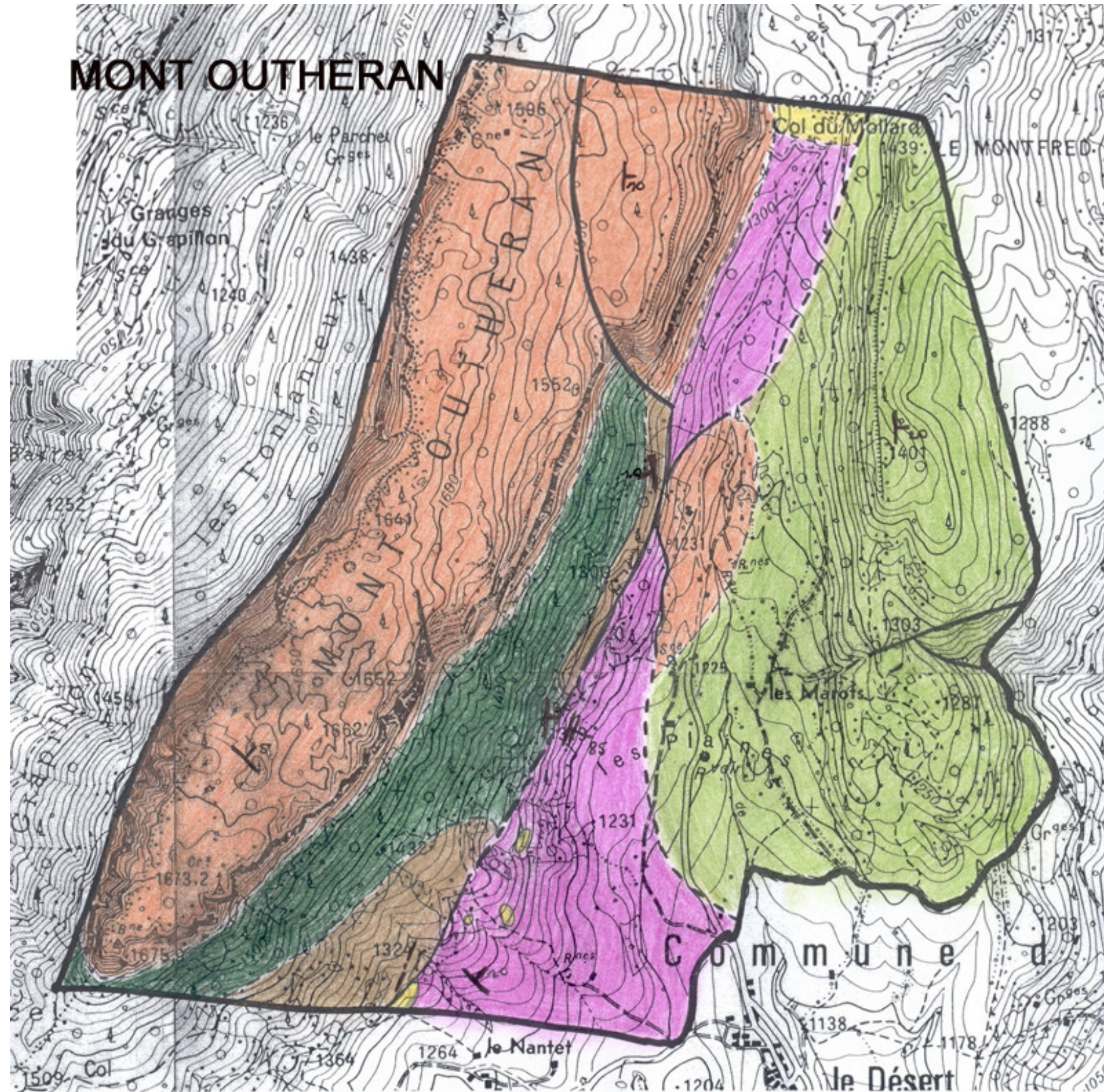
LA COCHETTE

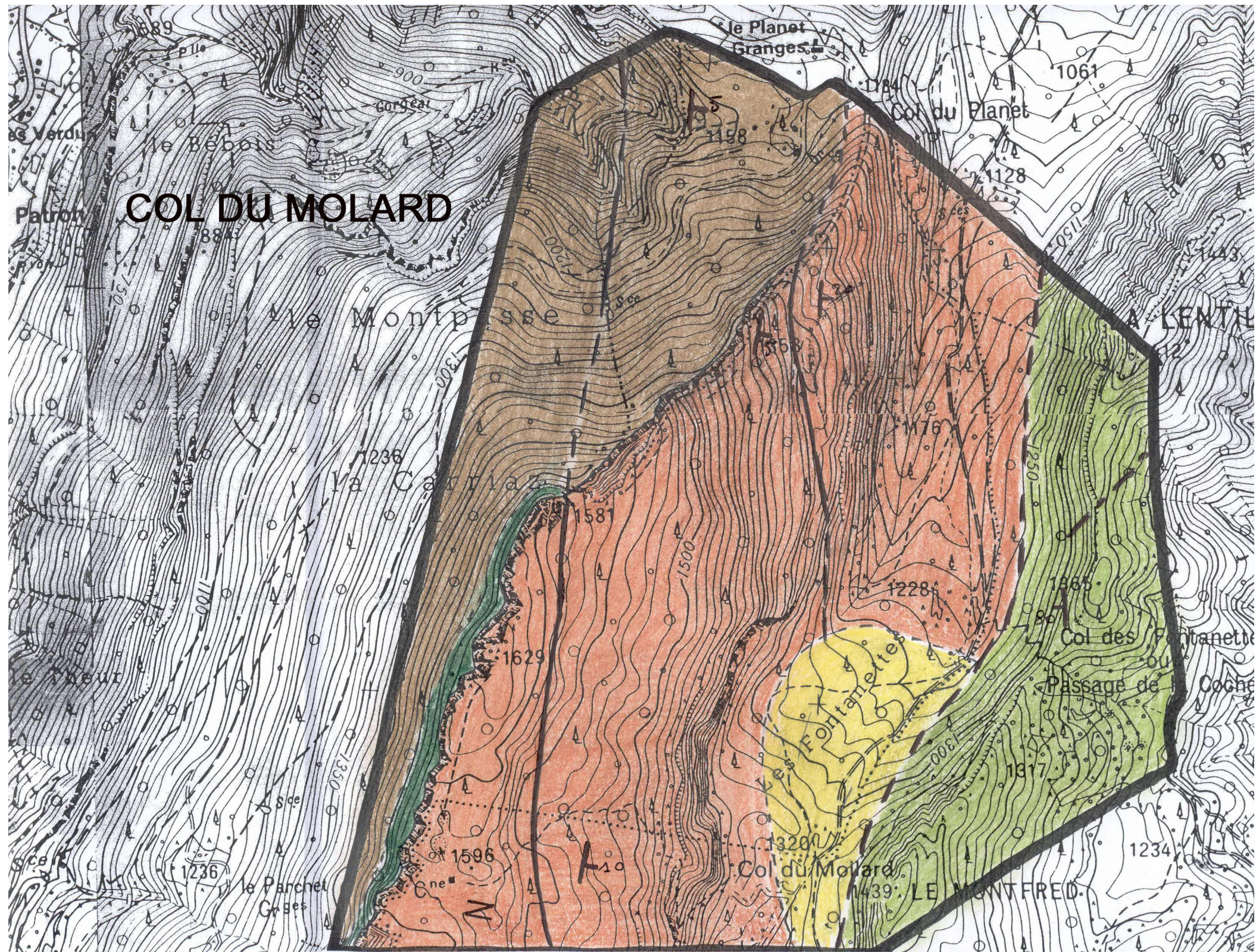
Commune de

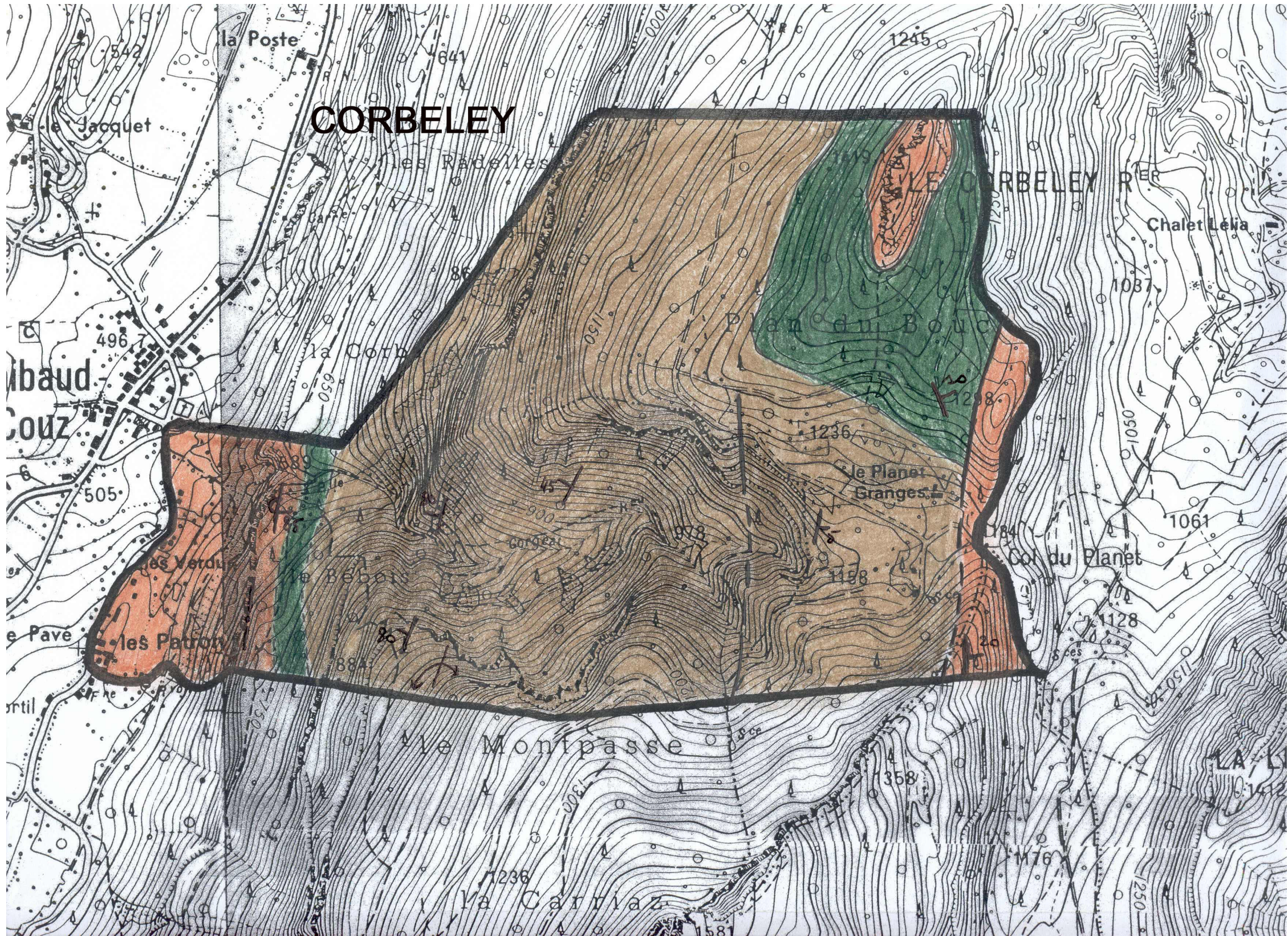
le Désert



MONT OUTHERAN


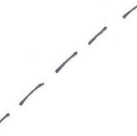


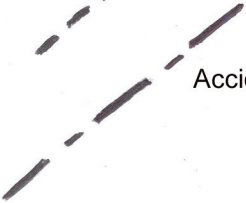












Légende

-  Oligocène (g2M, g2B)
-  Crétacé supérieur (C6-7L, C6-7C, C6-7M)
-  Aptien (n6L)
-  Urgonien (n4-5U, n5U, n50, n40, n4U, n4a)
-  Hauterivien (n3)
-  Valanginien (n2S, n2R, n2Co, n2F, n2C, n1-2M)
-  Berriasien (n1Cs, n1M, n1Ci, n1b, n1a)
-  Tithonique (J9)

-  Contour géologique
-  Contour géologique supposé
-  Contact anormal visible
-  Contact anormal présumé
-  Accident probable de nature mal déterminée
-  Pendage (chiffre en degré)
-  Verticalité
-  Horizontalité
-  Pendage renversé
-  Charnière (anticlinal, synclinal)
-  Schistosité