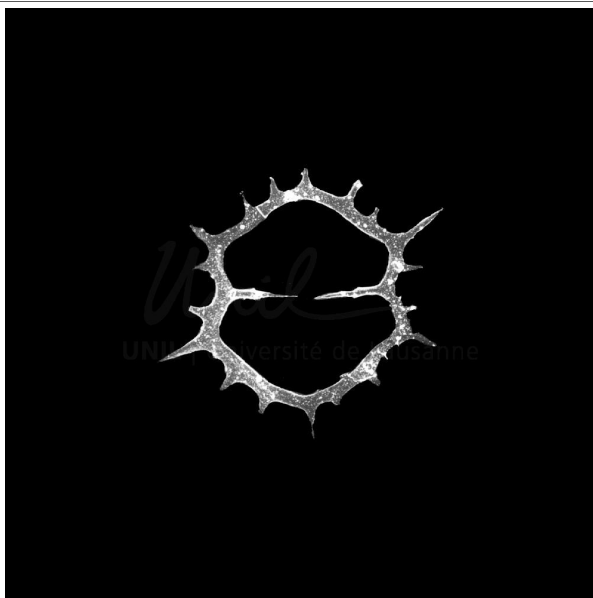
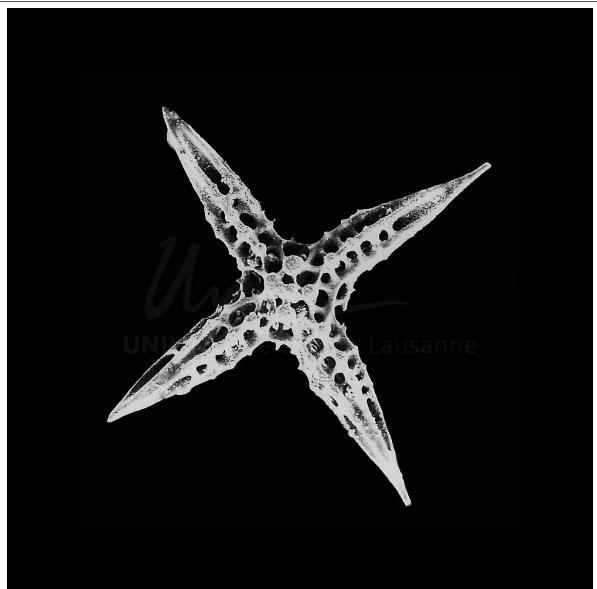


Banque de données
microphotographiques de
quelques radiolaires.





Acanthocircus bestiarius x.



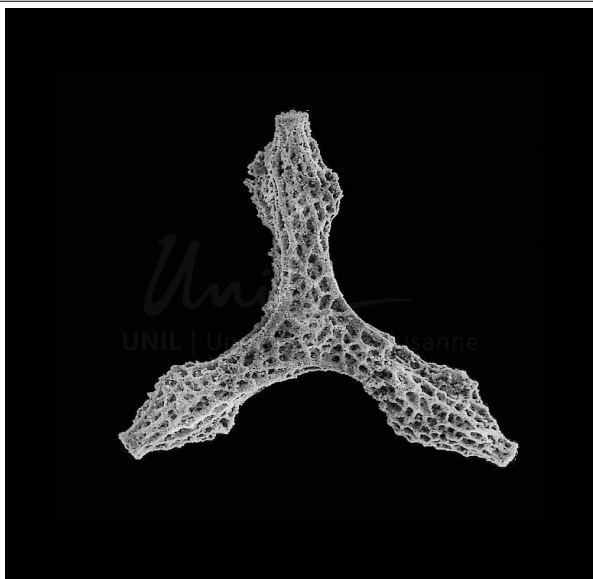
Archaeohagiastrum munitum x200



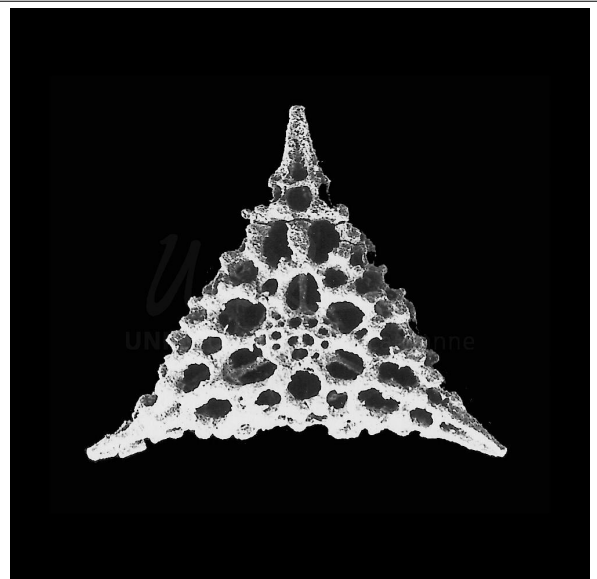
Paronaella pygmaea x200



Becus helenae x.



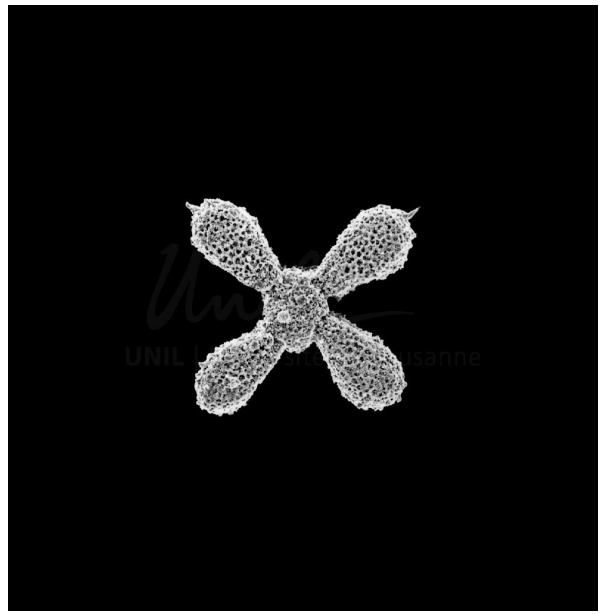
Angulobracchia sicula x150



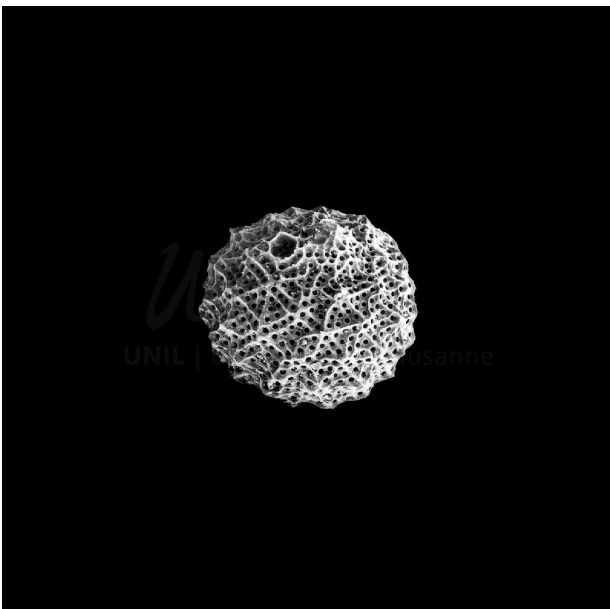
Perispyridium ordinarium x200



Bernoullius rectispinus rectispinus x150



Savaryella spinosa x.



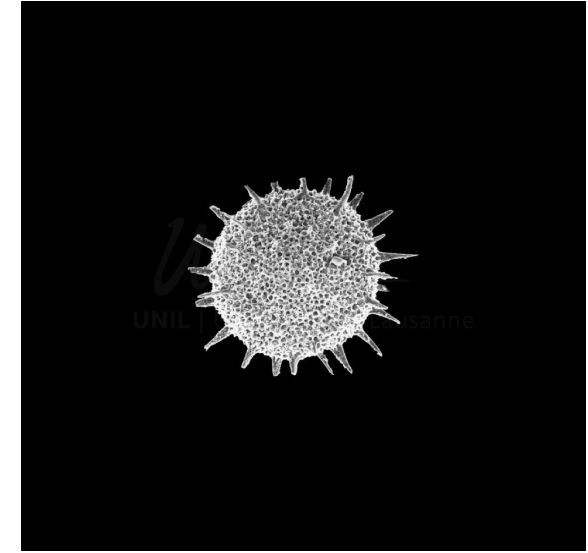
Cryptamphorella crepida x.



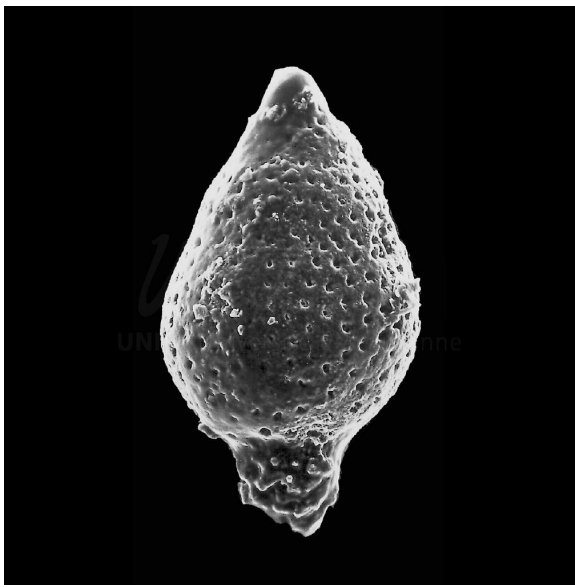
Dictyomitra communis x.



Tetradietyma corralitosensis x200



Dactyliodiscus lenticulatus x.



Cyrtocapsa mastoidea x500



Dorypyle communis x.



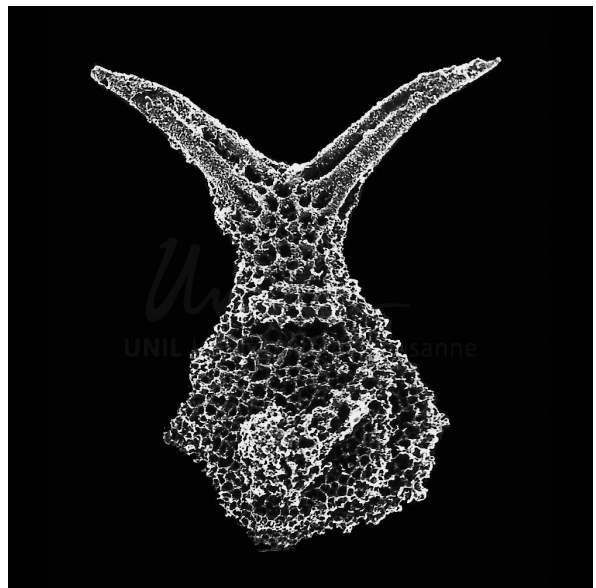
Vitorfus campbelli x.



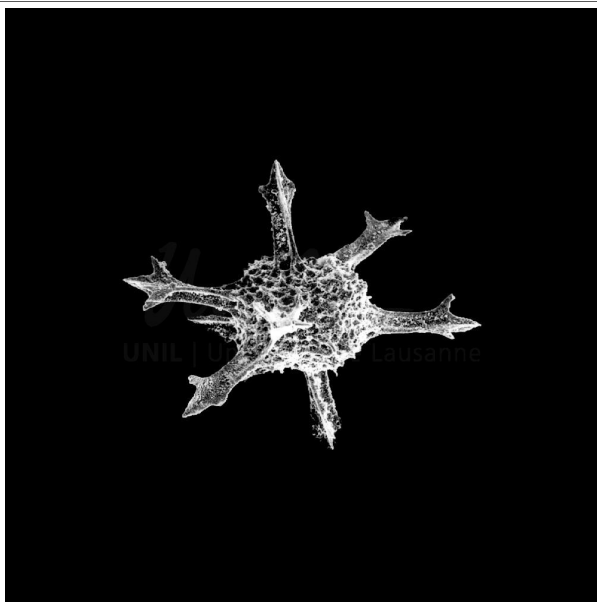
Emiluvia lombardensis x150



Eucyrtidiellum semifactum x450



Bernoullius dicera x200



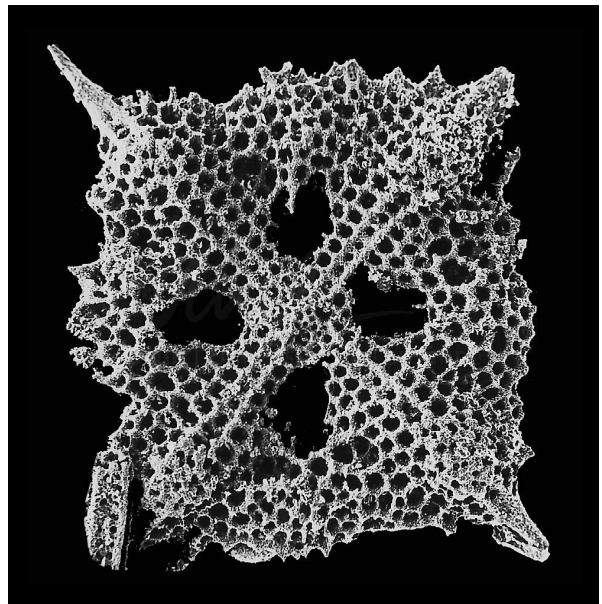
Falsocromyodrymus mirabilis x.



Napora lospensis x200



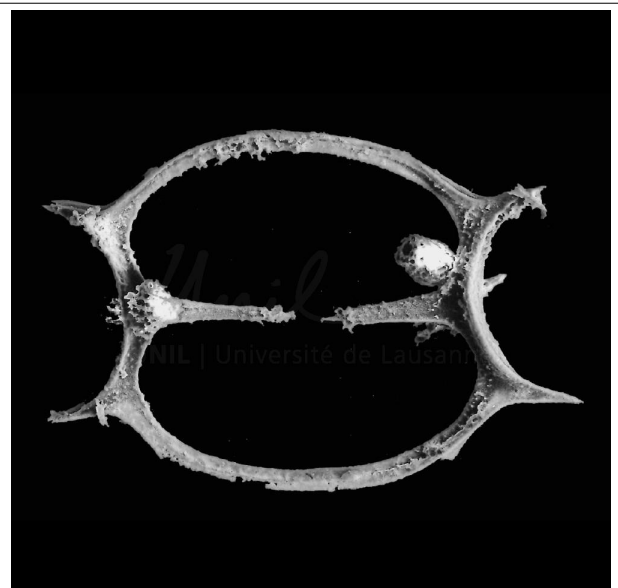
Gongylothorax oblongus x600



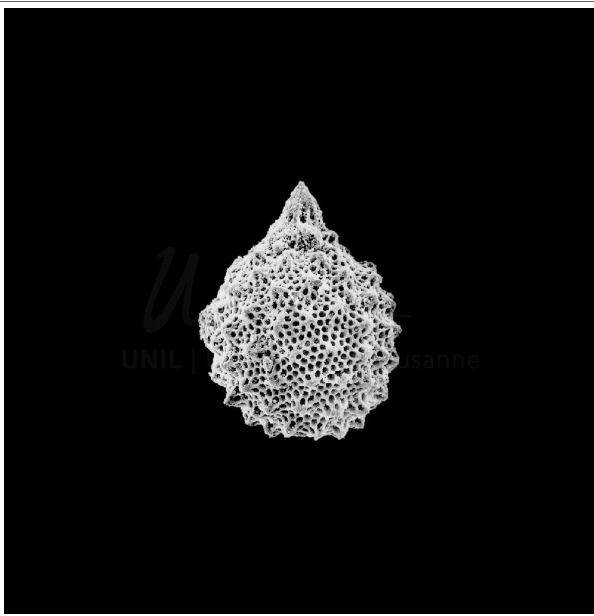
Higumastra coronaria x150



Mirifusus gadalupensis x150



Hexasaturnalis tetraspinus x150



Hiscocapsa grutterinki x.



Saitoum pagei x400



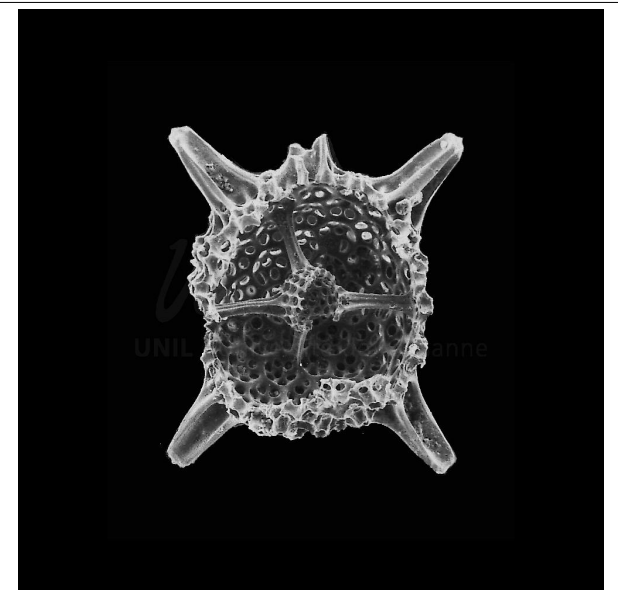
Triactoma cornuta x150



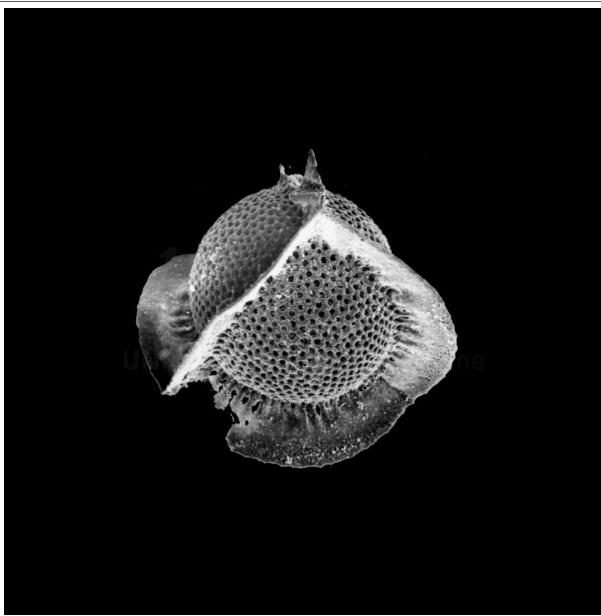
Hsuum feliformis x200



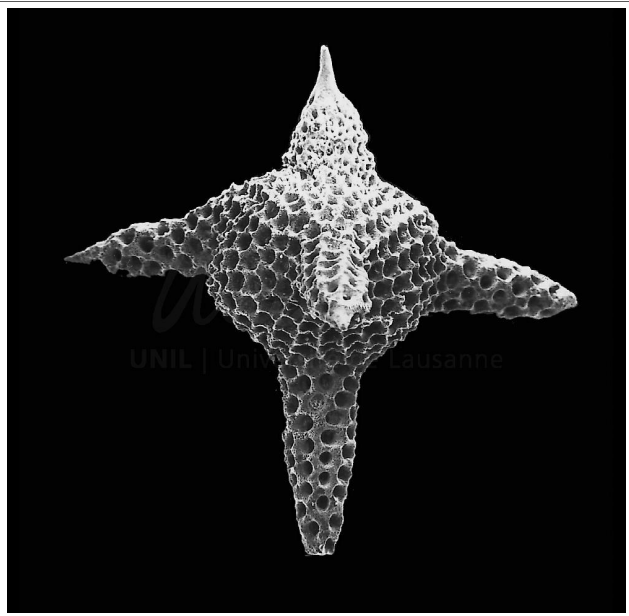
Katroma milloti x150



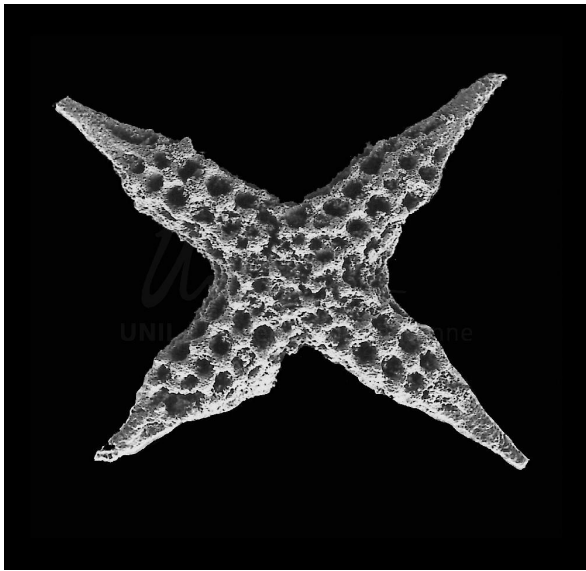
Leugeo hexacubicus x200



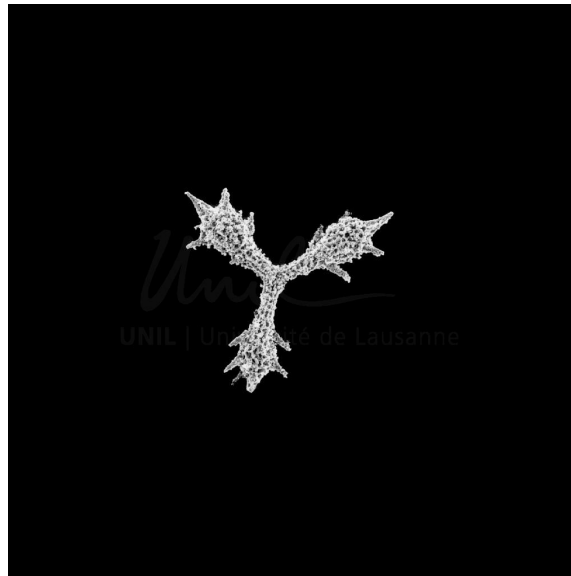
Mallanites romanus x.



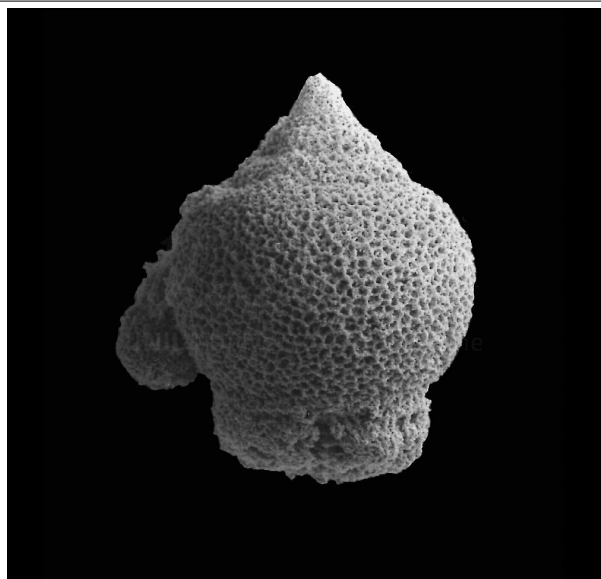
Podocapsa amphitrepera x150



Pseudocrucella sanfilippoae x200



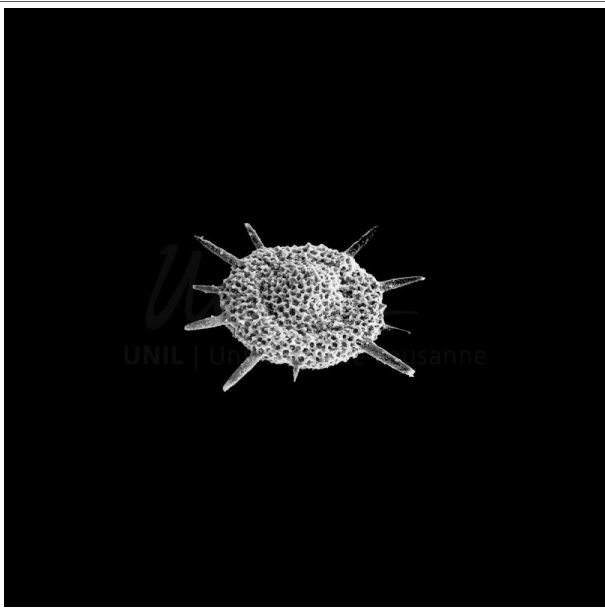
Paronaella grapevinensis x.



Obesacapsula morroensis x100



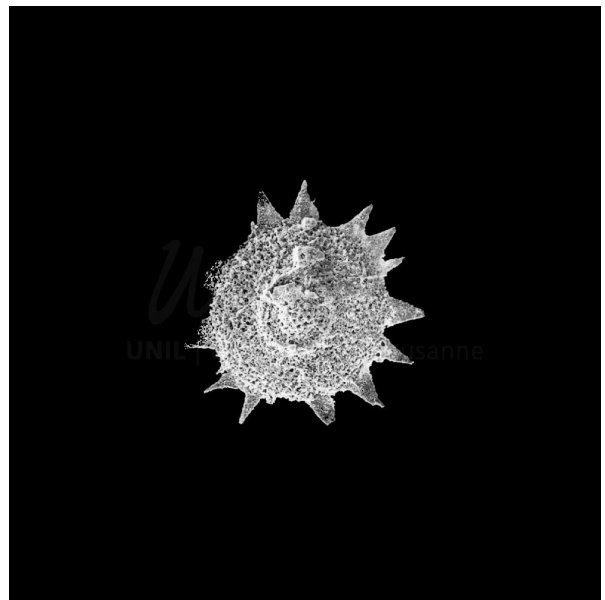
Podobursa helvetica x150



Patellula eclipctica x.



Phalangites calamus x.



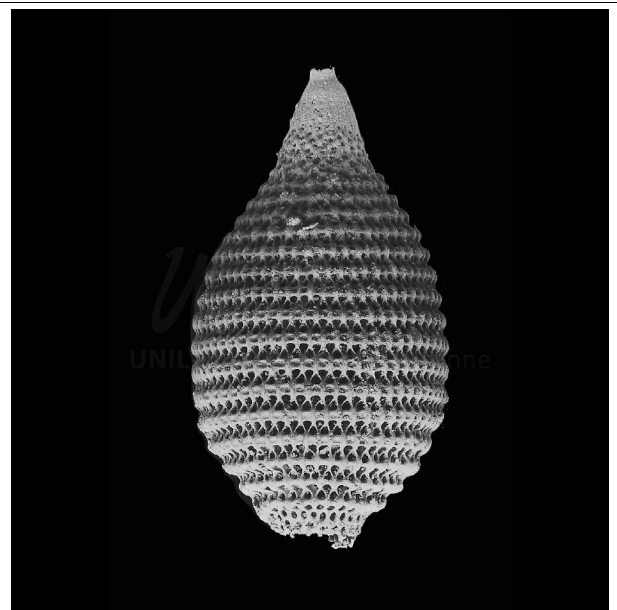
Godia coronata x.



Parvicingula boesii x200



Pantanellium riedeli x250



Mirifusus diana minor x150



Protoxiphotractus machinosus x.



Protunuma japonicus x400



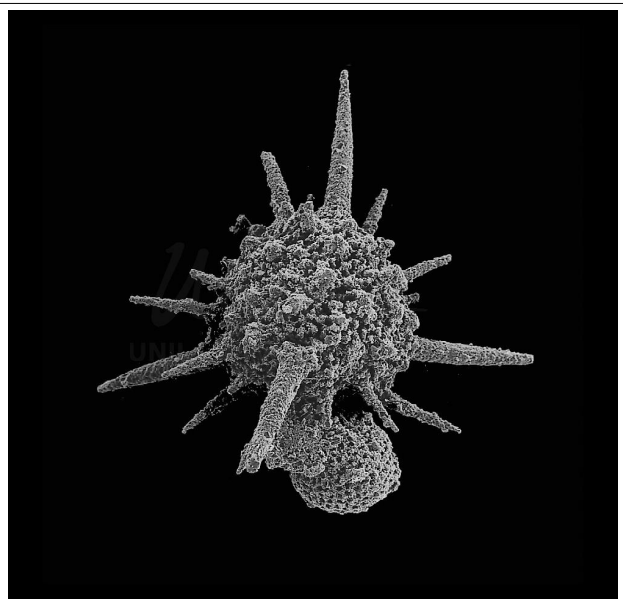
Saitoum elegans x400



Pseudoeucyrtis apochrypha x.



Pseudoaulophacus sculptus x.



Pyramispongia barmsteinensis x150